

Lucent gasket - BC LED

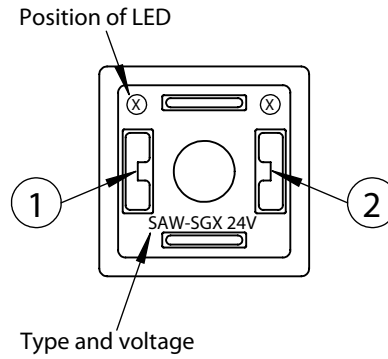
Description

The lucent gasket is used as induction-voltage-limiter and self-illuminating gasket instead of a common elastomer-gasket between solenoid and the female connector. The lucent gasket is available for connector type SAW in different variations.

Design and mode of action

The lucent gasket consists of an electrical switch (SMD-technic), that is covered by elastomer. When the lucent gasket is applied to the solenoid, it is contacted electrically. If supply voltage is applied, the gasket illuminates. If the supply-voltage is turned off, the gaskets electrical switch works as a induction-voltage-limiter.

Labeling

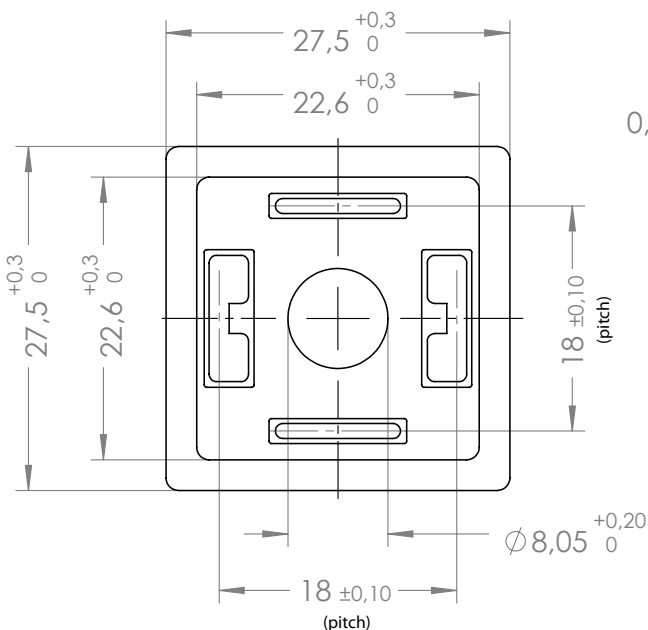


Specifications

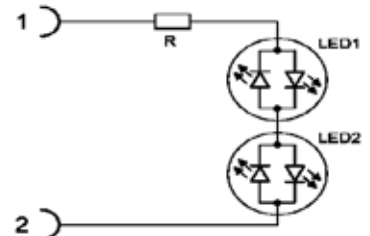
Supply voltage: AC/DC
 current consumption: 2 mA (nominal voltage)
 max. working voltage: nominal voltage + 10%
 Sealing-material: Polyurethan
 Connection arrangement : Any (not dep. on polarity)
 Colour: green

Working temperature: -30°C to +65°C
 Induction-voltage-limitation: 24V = 12V - 24V

Dimensions in [mm] LD-SAW F



Circuit R



Assembly

