

Strainer BC-SF 01 / BC-SF 02

with and without magnet, brass or stainless steel design

Description

The strainers type SF 01 are used as slanted valves and they protect unfailing against damage of the devices installed in the pipework by contaminated media. Special measuring instruments with magnetical components are savely protected against ferritic particles.

Areas of application

For liquids, gases and steams up to 150°C. water, oil etc.
To protect pumps, gearboxes, flow-devices and valves.



BC-SF 01 (brass)

Detailed data sheet on demand

Specifications

Design:	2- part body (screwed)	Materials:	Double screen 0,25 mm
Connection:	Female connection., G3/8 - G2 (DIN ISO 228 T1)		Housing: brass CuZn35Pb2Al-C
Installation:	Cap down, note direction of flow		Cap: brass CuZn40Pb2
Medium pressure:	Max. 16 bar		Screen cylinder: stainl. steel 1.4301
Temperature:	Max. 180°C		Seal: PTFE
mesh aperture:	Single screen 0,50 mm (G3/8" - G1") 0,75 mm (G1¼" - G3")		Other mesh apertures on demand.

BC-SF 02 (stainless steel)

Detailed data sheet on demand

Specifications

Design:	2- part body (screwed)	Temperature:	-20°C up to max. +180°C
Connection:	Female connector G1/2 - G2 (DIN ISO 228 T1) Welding end, DN15 - DN50 acc. to DIN 3239, ISO 4200 or DIN 11850-2	Mesh aperture:	Single screen 0,50 mm Double screen 0,25 mm
Installation:	Cap down, note direction of flow	Materials:	Housing: stainless steel 1.4408 Cap: stainless steel 1.4408 Screen cylinder: stainl. steel 1.4301 Seal: PTFE
Medium pressure:	Max. 40 bar		

Universal - non return valve BC-RV

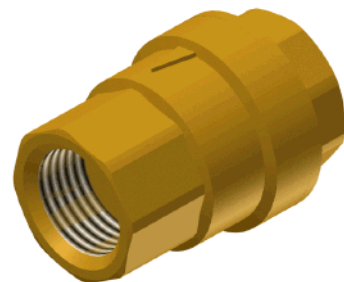
2-part body

Description

High quality non return valve for industrial usage.

Special editions

- housing chemically nickel-plated



Detailed data sheet on demand

Specifications

Connection type:	Thread I-I ISO228	Temperature:	Medium: -20°C up to +100°C
Opening pressure:	0,05 bar	Installation:	any
Materials:	Housing DIN/EN: CW617N-MS Internals: Synthetic Sealing DIN/EN: NBR	Options:	FKM-sealing Stainless steel VA