

2/2-way solenoid valve BC-248

DN 13 to 50

Description

In resting position, medium pressure builds up via a pilot hole on the top face of the piston. The valve remains closed.

When energised, at first only the pilot valve opens. A relief hole, which opens, reduces the pressure above the piston. The medium pressure causes the piston to lift and the valve opens.

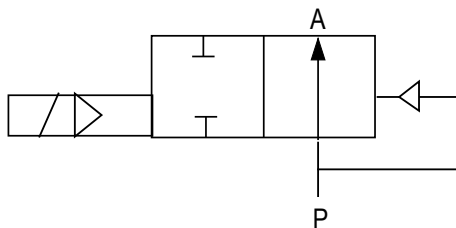
Features

- Optional manual operation (HA)
- Carrying handle



Specifications

<p>Design: Servo-controlled solenoid valve with piston seal (optionally with HA manual operation) up to 30 bar</p> <p>Connection: G 3/8" - G 2"</p> <p>Nominal diameter: DN 13 - DN 50</p> <p>Working pressure: 1,5 bar to 40 bar (60 bar optional)</p> <p>Direction of flow: Determined</p> <p>Media: Neutral liquids</p> <p>Medium temperature: -20° to +65°C (depending on seal mat.)</p> <p>Ambient temperature: max. +50°C</p>	<p>Valve housing: Brass, stainless steel on demand</p> <p>Seal: NBR, EPDM</p> <p>Installation: Solenoid pref. up</p> <p>supply voltage: Intrinsically safe: 12 V - 24 V</p> <p>Protection type: IP 65</p> <p>Electrical part: DIN EN 175301-803-plug, Terminal box. cable</p>	<p>Mining: I M2 Ex ia I Mb</p> <p>Chemistry: $\text{II 2G Ex ia IIC T4 Gb}$</p> <p>Certificate: DMT 02 ATEX E 089</p>
---	---	---



Switching function:
 NC (normally closed)
 NO (normally open) on demand

DN [mm]	Materials Housing/ Seal	Pressure [bar]	Connection	Valve
13	Brass / NBR	1,5 - 40	G 3/8	BC-248.40
13	Brass / NBR	1,5 - 40	G 1/2	BC-248.41
20	Brass / NBR	1,5 - 40	G 3/4	BC-248.42
25	Brass / NBR	1,5 - 40	G 1	BC-248.43
32	Brass / NBR	1,5 - 40	G 1 1/4	BC-248.44
40	Brass / NBR	1,5 - 40	G 1 1/2	BC-248.45
50	Brass / NBR	1,5 - 40	G 2	BC-248.46

